

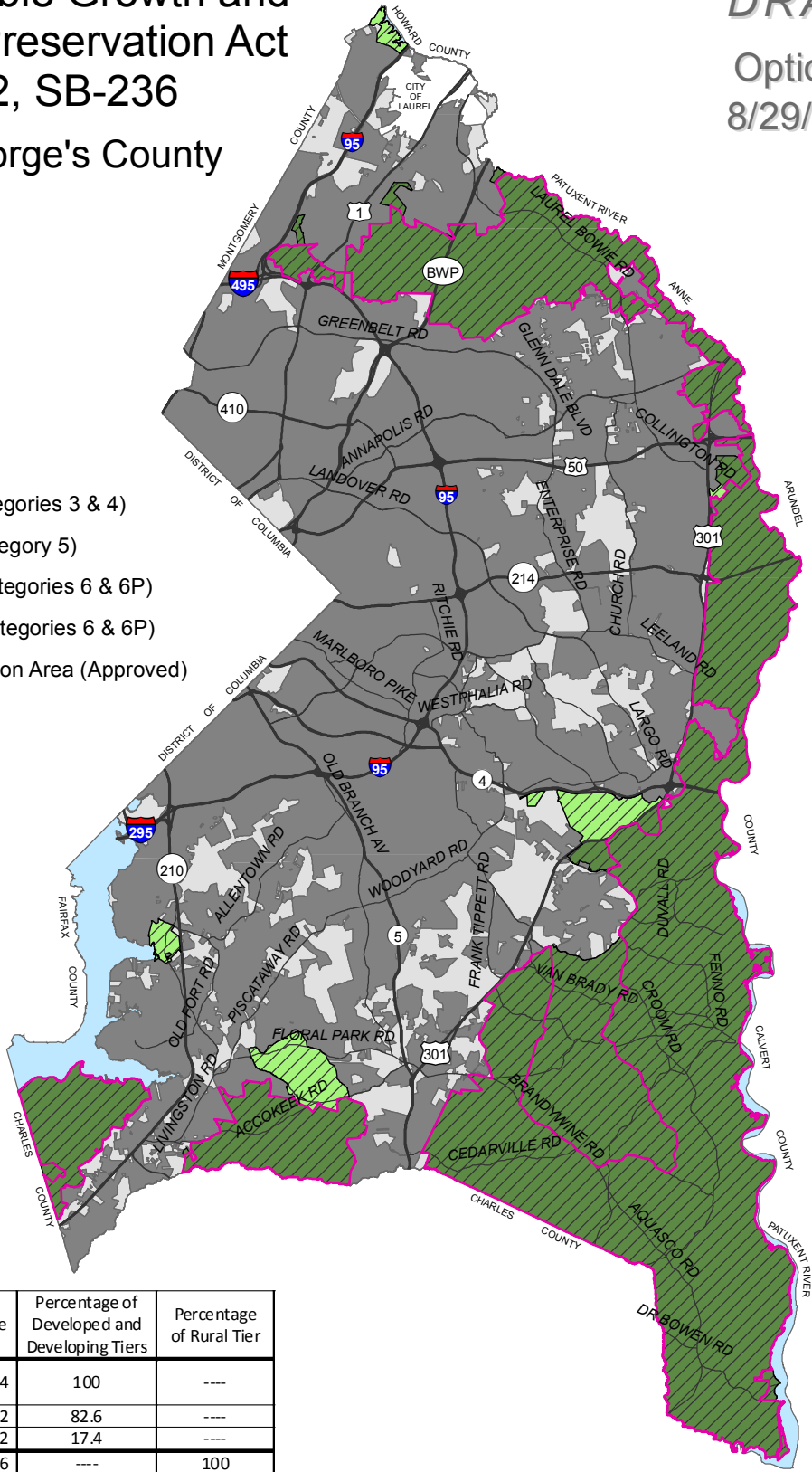
The Sustainable Growth and Agricultural Preservation Act of 2012, SB-236

Prince George's County

DRAFT
Option B
8/29/2012

Legend

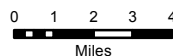
- Tier I (Sewer Categories 3 & 4)
- Tier II (Sewer Category 5)
- Tier III (Sewer Categories 6 & 6P)
- Tier IV (Sewer Categories 6 & 6P)
- Priority Preservation Area (Approved)
- Rural Tier
- Major Roads



Option B	Acreage	Percentage of Developed and Developing Tiers	Percentage of Rural Tier
Developed and Developing Tiers	204,574	100	----
Tier I	168,962	82.6	----
Tier II	35,612	17.4	----
Rural Tier	103,356	----	100
Tier III	4,604	----	4.5
Tier IV	98,752	----	95.5



The Maryland-National Capital
Park & Planning Commission
Prince George's County
Planning Department
Geographic Information System



1:308,354

Version 2
8/29/2012



This map may not be reproduced, stored in a retrieval system, or transmitted by any form, including electronic or by photo reproduction, without the express written permission of The Maryland-National Capital Park and Planning Commission. For more information, contact the Prince George's County Planning Department in Upper Marlboro, Maryland.