

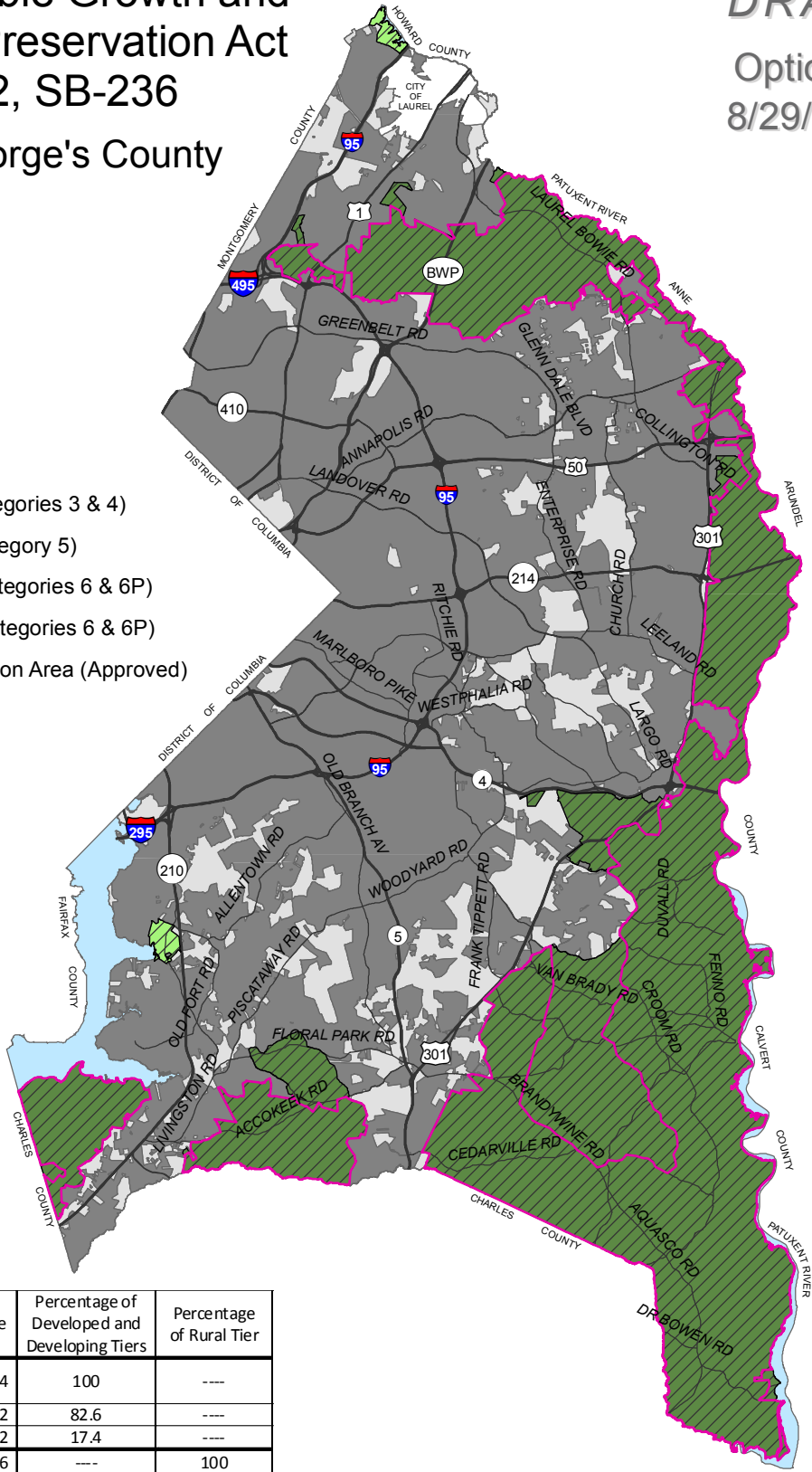
# The Sustainable Growth and Agricultural Preservation Act of 2012, SB-236

## Prince George's County

**DRAFT**  
Option A  
8/29/2012

### Legend

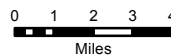
-  Tier I (Sewer Categories 3 & 4)
-  Tier II (Sewer Category 5)
-  Tier III (Sewer Categories 6 & 6P)
-  Tier IV (Sewer Categories 6 & 6P)
-  Priority Preservation Area (Approved)
-  Rural Tier
-  Major Roads



Option A	Acreage	Percentage of Developed and Developing Tiers	Percentage of Rural Tier
<b>Developed and Developing Tiers</b>	204,574	100	----
Tier I	168,962	82.6	----
Tier II	35,612	17.4	----
<b>Rural Tier</b>	103,356	---	100
Tier III	776	---	0.8
Tier IV	102,580	---	99.2



The Maryland-National Capital  
Park & Planning Commission  
Prince George's County  
Planning Department  
Geographic Information System



1:308,354

Version 2  
8/29/2012



This map may not be reproduced, stored in a retrieval system, or transmitted by any form, including electronic or by photo reproduction, without the express written permission of The Maryland-National Capital Park and Planning Commission. For more information, contact the Prince George's County Planning Department in Upper Marlboro, Maryland.